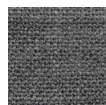


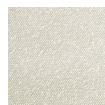
# Foundry Sofa



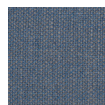
Andorra  
Almond



Andorra  
Pewter



Copenhagen  
Fossil



Hanson  
Navy



Canyon  
Whiskey  
Leather

Leather not available in Canada

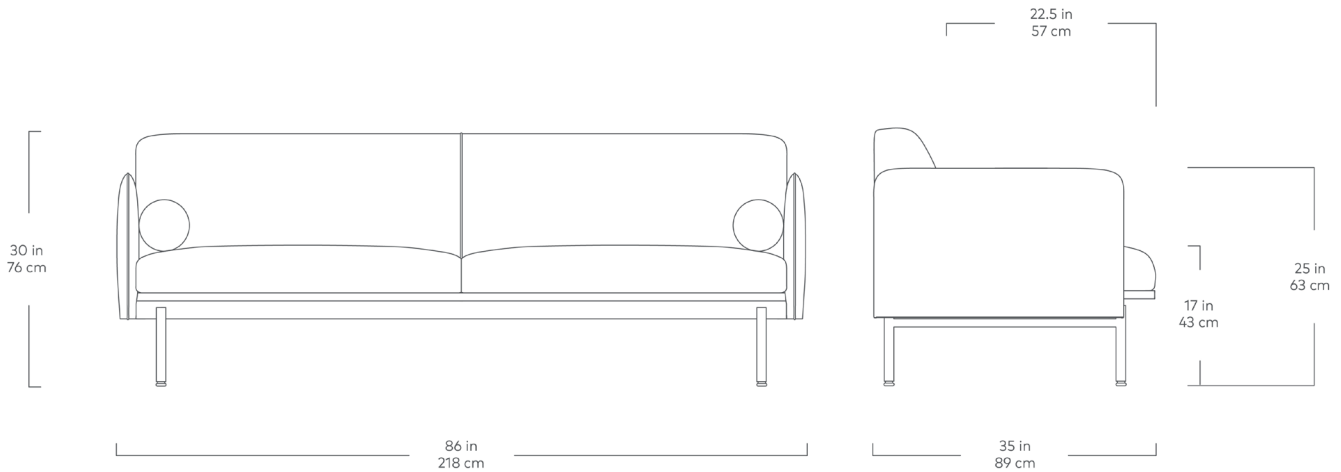
The Foundry Upholstery Series showcases tailored minimalism with details that elevate fashion and function to suit any residential or commercial setting. Inspired by elements of classic Scandinavian design, the Foundry Bi-Sectional offers ample sophistication as a standalone piece, showcasing striking lines, an extra slender tight back frame and cushions that seem to float above elevated, cylindrical steel legs. Two bolsters offer additional style and comfort, while the sturdy, steel reinforced FSC®-Certified frame ensures that Foundry holds up in high-traffic environments.

Design Trade Professionals: We aim to keep our designs in stock and ready to ship quickly for projects on a tight timeline. Designs may be customized with COM and alternate finishes (minimum quantities may apply).

## Gus\*

FOR PRODUCT INFORMATION, SWATCHES + ORDERING: [HELLO@RYPEN.COM](mailto:HELLO@RYPEN.COM) | 800.560.0554 | [WWW.RYPEN.COM](http://WWW.RYPEN.COM)

# Foundry Sofa



- Features elegant lines and thin, elevated legs.
- Add the Foundry Ottoman to the Foundry Sofa to create the Foundry Bi-Sectional.
- The tight back sofa has two removable seat cushions, and comes with two loose bolster cushions.
- Seat and bolster cushions are made with Dacron-wrapped, high resiliency, medium density foam.
- Inner frame is 100% kiln-dried FSC®-Certified hardwood in support of responsible forest management (FSC® 092551).
- Frame is reinforced with steel for long lasting durability.
- 9-gauge No-Sag, sinuous spring suspension system.
- Cylindrical legs are made from black powder-coated steel.
- Non-marking leveler feet can be adjusted for stability on uneven floor surfaces.
- Manufactured to meet California TB117-2013 fire safety standards without the use of flame retardant additives in the upholstery foam.
- All fabric is California TB117-2013 certified and double rub tested.
- Our leathers may have distinct surface characteristics, natural markings, and colour variations which differ from hide to hide and from one product to another, making each leather product unique.



**Gus\***



PROFESSIONALS

**rypen**  
STUDIO

Register for Our Exclusive  
Project Builder + Ordering Platform

